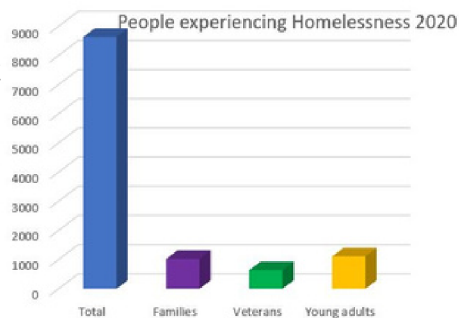


# Youth Experiencing Homelessness

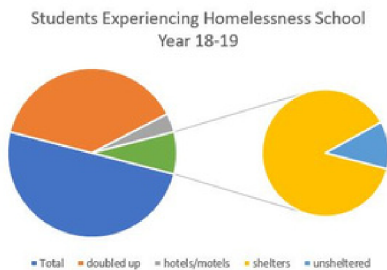
As of January 2020, Michigan had an estimated 8,638 experiencing homelessness on any given day, as reported by Continuums of Care to the U.S. Department of Housing and Urban

Development (HUD). Of that Total, 1,026 were family households, 639 were Veterans, 484 were unaccompanied young adults (aged 18-21), and 1,109 were individuals experiencing chronic homelessness.



Public school data reported to the U.S. Department of Education during the 2018- 2019 school year shows that an

estimated 34,853 public school students experienced homelessness over



the course of the year. Of that total, 675 students were unsheltered, 4,922 were in shelters, 2,502 were in hotels/motels, and 26,754 were doubled up.

## Primary Reasons for youth homelessness:

family dysfunction, rejection and conflict, as well as economic hardship, lack of employment and residential instability.

- 1 of 7 youth identified as LGBTQ
- 1 of 15 youth have incarcerated parents
- Nearly 30% left home due to abuse and/or neglect

**Main Office:**

1044 U.S. 23 North  
Alpena MI 49707

**Call:**

989-356-4567 x. 203

989-464-0992

**Fax:**

989-354-6100

**Visit us at:**

[www.cfsnemi.org](http://www.cfsnemi.org)

If you would like to know how you can help outside of referring youth or providing shelter please visit our website or facebook. We are always taking donations for gas cards, grocery gift cards, and items for our survival kits.

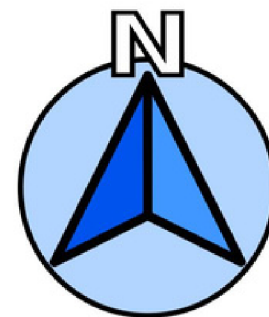


## Survival Kit Items

Shampoo a Conditioner	Winter Hat
Body Wash/Bar soap	Blanket
Deodorant	Body Lotion
Toothbrush	Hand sanitiz.er
Toothpaste	First Aid items
Floss	Lip balm
Hair Brush/comb	Washcloth
Razors	Bath towel
Socks (black)	Flashlight
Gloves	

**Find us on Facebook**

***This program is funded by the State of Michigan***



COMPASS  
NORTH

## Runaway & Homeless Youth Program

Servicing Northeast Michigan Since 2016

989-356-4567 ✦ [www.cfsnemi.org](http://www.cfsnemi.org)



**Child and Family Services**  
of Northeast Michigan, Inc.



# COMPASS NORTH

989-356-4567 x203

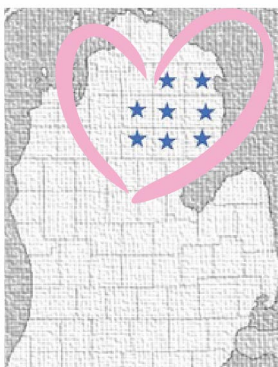
989-464-0992

## WHOM WE SERVE:

Homeless and runaway youth or those that are at risk of becoming homeless or runaways.

## COUNTIES SERVED:

Alcona  
Alpena  
Crawford  
Iosco  
Montmorency  
Ogemaw  
Oscoda  
Roscommon



*Referrals forms can be made by anyone and can be found on our website*

## AGES SERVED:

Transitional Living Program:

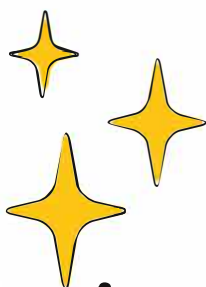
- Youth age 16 through 24

Youth and Family Outreach:

- Youth age 12 through 24

Basic Care Center:

- Youth age 12 through 17



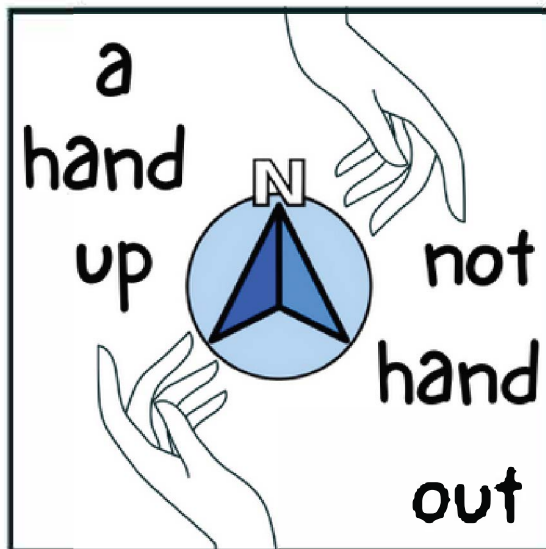
**All Services are completely voluntary, FREE, and confidential.**

## Transitional Living Program (TLP)

### Services:

This is a hands-on approach working with youth ages 16-24, providing up to 18 months of programming to assist youth with achieving success in areas of:

- Education
- Employment
- Housing
- Independent Living Skills



A host home situation is also available to TLP youth who are living with a friend or extended family member. Households that agree to enter into this agreement are eligible to receive \$20/day compensation in the form of a monthly payment according to the following guidelines:

- Everyone over 18 in the household must pass a background check.
- Youth 16 & 17 years of age need parental/guardian consent.

## Youth and Family Outreach Services:

- The goal of this program is for family reunification whenever possible.
- This program provides crisis management to youth and their families.
- Provides substance use/abuse, mental health and truancy prevention counseling, mental health and truancy counseling to youth and their families.



## Basic Care Center (BCC) Services:

- The goal of this program is for family reunification whenever possible.
- Youth may be provided temporary shelter for up to 21 consecutive days in a host home.
- This program provides prevention and reunification services to youth, ages 12-17, and their families for up to 90 days.

If reunification is not possible for the youth, the youth will be transferred to TLP if age appropriate.

**If you or someone you know has concern of a youth who may be in need of services and support, please contact Child and Family Services of Northeast MI, Inc.**